
Getting Started with DCS 9

For Administrators

© 1986-2007 by FutureSoft, Inc. All rights reserved.

DynaComm Connectivity Series™ Getting Started with DCS 9 for Administrators

This manual, and the software described in it, is furnished under a license agreement. Information in this document is subject to change without notice and does not represent a commitment on the part of FutureSoft. FutureSoft assumes no responsibility or liability for any errors or inaccuracies that may appear in this manual.

No part of this manual may be produced or transmitted in any form or by any means, electronic or mechanical, including photocopying and recording, or otherwise, without the prior, written permission of FutureSoft, Inc.

DynaComm, DynaComm Connectivity Series, DynaComm Client Option and FutureSoft are registered trademarks of FutureSoft, Incorporated in the United States and/or other countries. All other trademarks are the property of their respective owners or licensors.

Edition 1—2007 (e1-073107)

Document #E-GSA-DCS9000

Written and designed at:
FutureSoft, Inc.
12012 Wickchester Lane, Suite 600
Houston, Texas 77079-1221 USA

Printed in the USA.
1.800.989.8908

info@futuresoft.com

<http://www.futuresoft.com>

Table of Contents

Chapter 1 Introduction

DCS 9 Features.....	6
Client Option Packages	7
New In DCS 9.....	10
Upgrading to DCS 9.....	11
Product Support	11

Chapter 2 Planning Your Installation

Planning Considerations.....	13
DCS 9 Install Methods	15
Before You Begin	15
Installation Modifications	17

Chapter 3 Setup Program

Working with the Setup Program.....	21
-------------------------------------	----

Chapter 4 Standard Install

Standard Installation Overview	23
Standard Install Procedure	24
Licensing DCS 9 and Client Options	27
Installation Troubleshooting	27

Chapter 5 Removing DCS 9

Removing All Components.....	29
Removing Selected Components.....	30
Index	31

Chapter 1

Introduction

Thank you for choosing the DynaComm Connectivity Series 9—the most powerful terminal emulation product available for Windows. FutureSoft maintains an excellent source of easily accessible information on the World Wide Web. Find answers to your questions, check out new product information, view demonstrations of FutureSoft products, and more at <http://www.futuresoft.com>

If you are new to the DynaComm family, review the **Getting Started with DCS 9** manual which is designed to:

- Introduce you to the features and capabilities of the DynaComm Connectivity Series.
- Guide you through installation of a single-user copy of the software.
- Demonstrate how to use the basic functions.

If you are upgrading from a previous version of DynaComm, review this manual which is designed to:

- Present an overview of the DCS 9 product and all Client Options for a review of the scope of the DCS 9 product.
- Provide a list of installation planning considerations to help you determine your site requirements.
- Detailed information of all available install methods with DCS 9 to help you select the best method for your requirements.

DCS 9 Features

Standard features in DCS 9 include:

- Full suite of standard emulations

Base product emulations include:

ADDS VP/60
 AT&T 605/705
 ANSI-BBS (with SCO ANSI extensions)
 Digital VT Series (52/100/102/220/320/420)
 TeleVideo 925/950
 Wyse 50/60

Additional add-on emulations:

AT&T 4425 TN3270 TN5250
 HP 700/94 Tandem 6530

- A range of standard connectivity options

Base product connectors include:

Direct Serial
 Meridian LAT32
 Modem (TAPI)
 Telnet (TCP/IP and IPX/SPX)
 SSH 1
 SSH2

Additional connector:

Microsoft SNA Server (with TN3270 Client Option)

- Full suite of standard file transfer protocols

Base product file transfer protocols include:


Kermit FTP
 XYModem ZModem

Additional file transfer protocols:

IND\$FILE (with TN3270 Client Option)
 IXF (with Tandem 6530 Client Option)

- Drag-and-drop file handling

Load a session, memo, or script by dragging corresponding icon into the DCS application window.

- Euro symbol support 

Input or display the euro character representing European Union common currency.

- Menu Editor

Use the menu editor to customize application-level menus to send a string, launch an application or script.

- OLE-compliant text editor

An OLE-compliant text editor is included in the base product. Embed documents from other applications into a memo document.

- Powerful event-driven scripting language

An integrated, full-featured script language with over 350 commands and functions that include conditional execution, subroutine execution, event handling, and the creation of custom menus and dialog boxes.

- Toolbar editor

Customize application toolbar to create custom toolbar buttons to send a string, launch an application or script, or perform a menu command.

- Y2K Compliant

DCS 9 contains no date calculation functions. The only use of dates is through scripting functions that make a call to the Windows operating system and use the date provided by this system. Windows dates are based on a four-character year and, therefore, are not affected by the change of the century.

- WinHLLAPI and EHLLAPI support

DCS 9 includes both 32-bit EHLLAPI and 32-bit WinHLLAPI dynamic link libraries to support Microsoft® Windows® applications requiring HLLAPI interfaces. Custom applications can call these libraries directly to interact with TN3270 and TN5250 sessions.

Client Option Packages

To expand the functionality of DCS 9 to meet specific enterprise requirements, client option packages for specific host environments are available. These emulation products are installed during installation of the base product. The Licenser selected from the DynaComm Connectivity Series 9 program group is used to active a client option. Purchasing an individual emulator allows for supporting a unique computing environment and eliminates the expense of unnecessary emulations.

Each Client Option presents the same graphical interface as the base product to provide for a consistent computing environment. It also supports multiple emulation sessions from within a single instance of the application just as the base product allows.

AT&T 4425 Client Option

▼ Supported Emulations

- AT&T 4425
- Equivalent 6539 functionality

▼ Network Connectivity

The AT&T 4425 Client Option supports the following connectors included in the base product:

- Direct Serial
- Modem (TAPI)
- Telnet (TCP/IP and IPX/SPX)

▼ File Transfer Protocols

The AT&T 4425 Client Option supports the following file transfer protocols included in the base product:

- FTP
- Kermit
- XModem
- YModem
- ZModem

HP 700/94 Client Option

▼ Supported Emulations

- HP 700/92
- HP 700/94

▼ Product Highlights

- Hotspot support
- Support for downloadable characters and soft fonts
- On-screen function keys

▼ Network Connectivity

The HP 700/94 Client Option supports the following connectors included in the base product:

- Direct Serial
- Modem (TAPI)
- Telnet (TCP/IP and IPX/SPX)

▼ File Transfer Protocols

The HP 700/94 Client Option supports the following file transfer protocols included in the base product:

- FTP
- Kermit
- XModem
- YModem
- ZModem

Tandem 6530 Client Option

▼ Supported Emulation

- Tandem 6530

▼ Product Highlights

- EM3270 support
- Block mode type ahead
- Hotspot support

▼ Network Connectivity

The Tandem 6530 Client Option supports the following connectors included in the base product:

- Direct Serial
- Modem (TAPI)
- Telnet (TCP/IP and IPX/SPX)

▼ File Transfer Protocols

The Tandem 6530 Client Option supports the following file transfer protocols included in the base product:

- IXF

TN3270 Client Option

- ▼ Supported Emulations
 - 3278 Models 2 – 5
 - 3279 Models 2 – 5 (with and without extended attributes)
 - 3287 Telnet printing support
 - TN3270E with print
- ▼ Product Highlights
 - EHLLAPI
(32 bit dynamic link libraries to support Microsoft)
 - WinHLLAPI
(Windows applications requiring HLLAPI interfaces)
 - Hotspot support
 - LU1/LU3 print
- ▼ Network Connectivity

The TN3270 Client Option supports the following connectors:

 - Microsoft SNA Server with print support
 - Telnet
- ▼ File Transfer Protocols

The TN3270 Client Option supports the following file transfer protocol:

 - IND\$FILE (supports TSO, CICS and CMS)

TN5250 Client Option

- ▼ Supported Emulations
 - 5250 Models 2 – 5
 - 3812 Telnet printing
 - TN5250E with print
- ▼ Product Highlights
 - EHLLAPI
(32 bit dynamic link libraries to support Microsoft)
 - WinHLLAPI
(Windows applications requiring HLLAPI interfaces)
 - Hotspot support
- ▼ Network Connectivity

The TN5250 Client Option supports the following connectors:

 - Telnet
- ▼ File Transfer Protocols

The TN5250 Client Option supports the following file transfer protocols:

 - FTP

New In DCS 9

▼ Certification for Windows Vista™

DCS 9 is certified as an application for the Windows Vista operating system.

▼ SSH 1 & SSH 2 connector support

DCS 9 now includes support for SSH 1 & SSH 2 connectors which can be selected through the New Session wizard or the Session Properties dialog.

▼ New file version numbers

In this release DCS 9 and all add-on Client Option files have a product version of 9.0.0.0.

▼ Documentation Library Update

The DCS 9 documentation library consists of:

- **Getting Started with DCS 9 for Users (ebook)**
Designed for the end user; includes features overview, installation and configuration procedures and a tutorial covering the major DCS 9 functions.
- **Getting Started with DCS 9 for Administrators (ebook)**
Designed for the System Administrator; focuses on the use of Web Install and DynaComm Multi-user Administrator functions.
- **Script Language Reference* (ebook)**
Technical information for all commands and functions used in the DCS Scripting Language.
- **Release Notes* (readme.doc)**
Includes last minute information not included in the documentation as well as important items of particular significance.

- **DCS 9 Online Reference* (Help system)**

Technical information for DCS 9 features and functions and all Client Options.

- **FSFTP Online Reference* (Help system)**

Technical information for FutureSoft's 32-bit File Transfer Protocol application.

- **HLLAPI Auto-Launch Configuration Online Reference* (Help system)**

Technical information for using HLLAPI calls with third-party applications.

- **Visual Basic Client Online Reference* (Help system)**

Technical information for Visual Basic Interface functions.

- **DCS 9 Administrator Online Reference* (Help system)**

Technical information for installation and maintenance of DCS 9; includes DynaComm Multi-user Administrator information.

- **Script Language Online Reference* (Help system)**

Technical information for all commands and functions used in the DCS Scripting Language.

- **Product Registration & Technical Support Card (print)**

Used to register the DCS 9 product; provides FutureSoft contact information.

* These items are provided on the installation CD-ROM in the /documentation folder. The most current electronic documentation for DCS 9 can be downloaded from <http://www.futuresoft.com/documentation>.

Upgrading to DCS 9

All DCS 7.1.0.4 (and earlier) installations must be removed before installing DCS 9. Do not install DCS 9 over an older installation of the DynaComm Connectivity Series.

Product Support

Registered users of DCS may call FutureSoft Technical Support for assistance. Standard telephone support is available weekdays, 8 a.m. to 5 p.m., Central Standard Time (CST).

Before contacting Technical Support, gather details about your question which should include all hardware and software configurations, the DynaComm version number (found through the About DynaComm option in the Help menu), any other software loaded (including TSRs) when you experienced the problem, and the exact sequence of steps that preceded the problem.

Phone Number

US 281.588.6868

UK +44 (0) 1260 292219

Fax Number

US 281.496.1090

UK +44 (0) 1260 292224

E-mail

US support@futuresoft.com

UK support@futuresoftuk.com

Visit the FutureSoft web site for more information at www.futuresoft.com

Chapter 2

Planning Your Installation

Planning Considerations

DCS 9 is a flexible product that offers a range of options for customizing application functions and appearance. Before installing, develop a plan that is well designed through careful consideration of various installation parameters. The more planning you undertake, the easier the installation process.

To effectively design your installation, consider the following:

- ▼ How much control over the functionality of DCS 9 should the end user be given?
- ▼ Which components and sub-components of DCS 9 are required?
- ▼ How will the DCS 9 application be distributed to the end user?
- ▼ Will users be involved in the distribution process?
- ▼ Which (if any) customized user files need to be distributed to the users?
- ▼ How will customized user files and updates be distributed to the end user?
- ▼ Can users be grouped to reduce the number of possible configurations and thus reduce support responsibilities?
- ▼ Is a specific time line required for the completion of all installs?
- ▼ What connectivity upgrades or modifications are needed to support each installation?
- ▼ What security issues must be considered for each site?
- ▼ Do any client machines currently have DCS 7.0 that will be upgraded?

User control

▼ Full user control

Full control allows the functionality of menus, toolbars, keyboard, display, and character translation to be changed at the user's discretion. Information about each Host system to be accessed is provided to the user. This includes:

- IP address or domain name for Telnet connections.
- Phone number, communication port number, baud rate, parity, and number of stop bits for Modem connections.
- Emulation type to use for the Host system and the emulation configuration parameters.

This scenario implies a multitude of configurations that may require extensive hand-holding from the technical support staff. Each user would need some level of training to understand the requirements for configuration as well as help with troubleshooting session or map files that do not function correctly.

• Limited user control

If the user is to have *limited control*, the administrator supplies all connection files (sessions), keyboard setups, scripts, etc. that users access but do not change. One set of updates or changes is created and distributed to all the users. This scenario implies a limited number of configurations that would result in fewer support requests. Troubleshooting would be decreased due to the smaller number of configuration possibilities.

User Groups

Analyzing user requirements and determining the homogenous groups allows for set up of a limited number of installation configurations. This in turn reduces requests for technical support.

Distribution

Another area of consideration is the method to use for product distribution.

Using the standard installation method from CD-ROM requires an individual to install the software on each client system as well as to keep track of all machines that have the installed product. Loss of or damage to the CD-ROM may occur as well as loss of control of registered copies.

Placing the installation media on a shared network drive reduces support personnel responsibilities and limits access to only those who should have access. Installs or upgrades can be conducted in a controlled manner whereby one group of client installs are performed, tested and modified before the next group receives the software. This can alert the system administrator to problem situations before propagating the same problem(s) to all clients.

Tailoring the installation can also include "who" installs the software. Automating the install process as much as possible allows users to perform client installs. This helps to distribute the workload of initial installs and upgrades and reduces requests of the technical support staff.

DCS 9 Standard Install

DCS 9 standard install allows for installation of DCS 9 from either a CD-ROM or from a shared network location using standard Windows commands. The installation can be customized with the use of a batch file to copy custom configured session, map and script files.

- ▼ Terminals running Windows 95, 98, NT, XP, 2003 Server or Windows Vista can install DCS 9 and all Client Options.
- ▼ Installation software can be placed on a secure, shared network location for access by multiple users.
- ▼ Two setup types are available:
 - Complete – installs all components and sub-components
 - Custom – installs selected components

Before You Begin

This section details activities to complete before, during and after installation. Read through all information in this section and complete the following activities.

▼ Check system requirements

The minimum requirements for operating DCS 9 on a personal computer are:

- Software

- Windows 95/98
- Windows NT 4.0
- Windows NT, Terminal Server Edition
- Windows 2000
- Windows 2003 Server
- Windows Vista

- ☒ Hardware

- 486 processor
- 10MB hard drive space (complete installation)
- CD-ROM drive

At least one of the following:

- For direct connections, one free serial port
- For phone line connections, a modem
- For network connectivity, a network interface card

▼ Remove previous versions of DCS

To upgrade from version 7.0 (or earlier) of DCS, remove any prior version before installing DCS 9. If you are not sure which version of DCS is installed, select **About DynaComm** from the **Help** menu to display product version information.

Files created after DCS 7.0 is installed, such as session files and scripts, are not removed during the uninstall process. These files can be stored elsewhere during the installation procedure.

▼ Backup the installation media

You are licensed to create up to three backup copies of DCS 9 installation media. Create at least one backup copy and use it for installation.

▼ Locate the product serial number

During the installation process, you will be required to enter a valid product serial number. The serial number is located on the installation media and your product registration card.

▼ Register DCS 9

Send the enclosed postage-paid registration card by mail or fax.

12012 Wickchester
Suite 600
Houston, TX 77079
Fax: 281.496.1090

▼ Close applications

Before starting the installation program, quit any running applications to ensure a good installation process.

Installation Modifications

During installation Windows Registry changes are made as well as the file and folder structure where DCS 9 is placed.

Registry Modifications

DCS 9 modifies the Windows Registry as noted below.

▼ Program group and path used by DCS 9

[HKEY_CURRENT_USER\Software\FutureSoft\DCSeries]

[HKEY_USERS\Default\Software\FutureSoft\DCSeries]

Settings stored here include:

- Telnet host name and port settings
- Print setup options
- Recent file list settings
- User information
- Toolbar settings
- Menu settings
- Keyboard mapper settings

▼ Version for DCS 9 and Client Options

[HKEY_LOCAL_MACHINE\SOFTWARE\FutureSoft\DCSeries]

▼ Shell association

[HKEY_CLASSES_ROOT]

Session (.ses), script (.dcp and .dct) and memo (.dcm) document types are established in the Windows Registry with these keys to create a shell association with DCSERIES.EXE.

▼ Uninstall string

[HKEY_LOCAL_MACHINE\SOFTWARE\Microsoft\Windows\CurrentVersion\Uninstall\DCSeriesDeinstKey]

This entry stores the pointer to the DCS 9 Uninstall string.

Folders

When DCS 9 is installed, several folders are created to hold files used by the program. Figure 2.1 lists all folders created in a DCS 9 installation with a description of the files sorted in each. Note that VBClient has several subfolders.

The default location for install folders is:

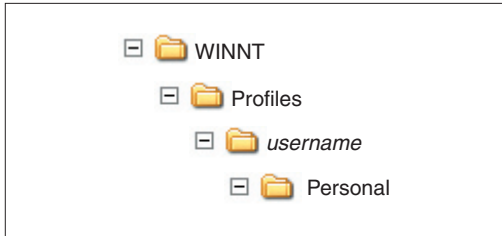
c:\Program Files\FutureSoft\DCSeries

	conn	connector (*.flx) files
	display	display (*.flx) files
	dnload	downloaded files (default target folder)
	emul	emulation (*.flx) files
	fonts	font files used by DCS
	ft	file transfer (*.flx) files
	maps	attribute (*.acm) and keyboard (*.kbd) files
	memos	memo (*.dcm) files (default target folder)
	scripts	script (*.dcp & *.dct) files (default target folder)
	session	session (*.ses) files (default target folder)
	trace	trace (*.trc) files (default target folder)
	upload	files to upload (default target folder)
	vbclient	Visual Basic Interface files (default target folder)
	samples	
	asp	sample Active Server Page (*.asp) files
	vb	sample Visual Basic (*.vbp, *.vbw & *.frm) files

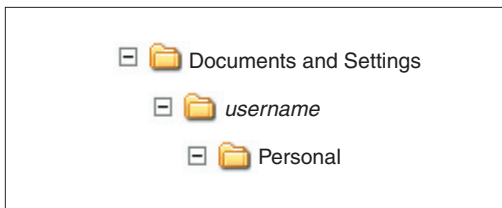
Figure 2.1
DynaComm Connectivity Series 9 folders and files.

Depending on the operating system, selected folders are created in a second location to hold custom files:

▼ Windows NT



▼ Windows 2000 Professional,
Windows 2000 Server
Windows XP
Windows 2003 Server



All folders, except VBClient, can be moved and redirected through the File Locations tab of the Options dialog. However, we recommend that “default” folders remain in their original install location to ensure function integrity.

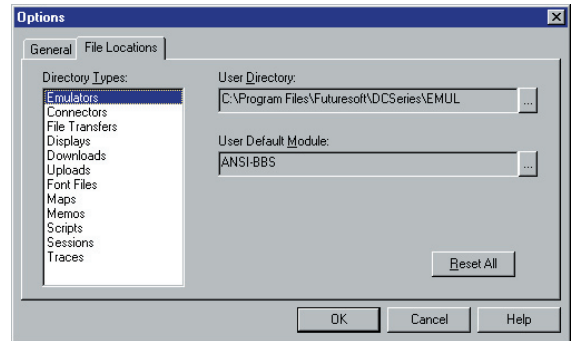


Figure 2.2
File Locations tab of Options
dialog.

Files and File Types

When DCS 9 is installed, eight (8) file types are placed in the install folders. Each file type has a specific function within DCS 9.

- ▼ Document files are opened and edited in DCS 9. These files can be associated with an icon placed on the desktop. Double-clicking on the file name or the associated icon starts DCS 9 and opens the file.

FutureSoft File Type	File Extension
Memo document	*.dcm
Script document	*.dcp
Session document	*.ses

- ▼ When a script document (.dcp) is compiled, a compiled script file (.dct) is created. These files are run or executed inside DCS 9 and can be associated with an icon. Double-clicking the file name or associated icon starts DCS 9 and runs the script.

FutureSoft File Type	File Extension
Script file (compiled script)	*.dct

- ▼ Program support files have extensions of .acm, .kbm and .trc. These files are loaded by DCS 9 when a session file is opened. These files are not opened directly in DCS 9 or in any other application.

FutureSoft File Type	File Extension
Attribute Map file	*.acm
Keyboard Map file	*.kbm
Trace Facility file	*.trc

- ▼ Session properties for emulations, connectors and file transfer protocols are stored in application files with an extension of .flx. These files are used by DCS 9 and are not opened directly.

FutureSoft File Type	File Extension
Emulation object file	*.flx
Connector object file	*.flx
File Transfer object file	*.flx

Chapter 3

Setup Program

Working with the Setup Program

The Setup Program guides you through the installation of DCS 9. Setup uses two basic functions: Starting and Exiting.

Before starting the Setup Program, be sure that you have reviewed the material in Chapter 2 Planning Your Installation. That chapter provides background information for the responses required for the Setup Program.

Working with the Setup Program includes:

Step 1: Start the Setup program.

More than one method can be used to start the Setup Program.

Step 2: Respond to Setup screens to install appropriate components.

The Setup Program presents a series of screens that require a response for each. Details for each screen are provided in the following chapters.

Starting Setup

The Setup Program is started through the:

- ▼ FutureSoft Connectivity Products menu
- ▼ Windows Run dialog
- ▼ Add/Remove Programs selection on the Control Panel

CD Autorun

If CD Autorun is enabled on the install system, the DCS Selection screen appears when you insert the installation CD-ROM in the appropriate drive.



Figure 3.1
CD Autorun dialog.

In addition to installing the software, the DCS Selection screen offers other choices for viewing documentation or other items on the CD-ROM.

Windows Run Dialog

If CD Autorun is disabled, the Setu program can be started from the Windows Run dialog.

- ▼ To start the Setup Program from the Windows Run dialog:
 - 1 Place the installation CD-ROM in the appropriate drive.
 - 2 On the Windows taskbar, click **Start** and then select **Run**.
 - 3 In the Run dialog, enter the CD-ROM drive name followed with “setup.exe”.
 - 4 Click **OK**.

The InstallShield Wizard dialog appears to indicate the status of the installation program load.

Control Panel

The Setup Program can also be started from the **Add/Remove Programs** selection in the Control Panel window.

- ▼ To start the Setup Program from the Windows Control Panel:
 - 1 On the Windows taskbar, click **Start**.
 - 2 Highlight **Settings** and select **Control Panel**.
 - 3 Double-click **Add/Remove Programs**.
 - 4 In the **Add/Remove Programs Properties** dialog, click **Install**.
 - 5 Place the installation CD-ROM in the appropriate drive.
 - 6 In the **Run Installation Program** dialog, click **Next**.

When Setup initialization is complete the **Welcome** screen appears. Setup is ready to begin installation of DCS 9.

Exiting Setup

During the installation process, if you click **Cancel** on any screen, the **Exit Setup** dialog appears.

- ▼ To respond to this screen, click either:
 - **Yes** to stop the installation and exit the Setup Program.
 - **No** to return to the previous screen and continue with Setup.

Chapter 4

Standard Install

Standard Installation Overview

The Standard Install procedure is executed from a:

- ▼ CD-ROM, or
- ▼ Shared network location.

Two setup types for Standard Install are available:

- ▼ Typical

Used to install base product with:

Emulators:

ADDS VP/60	Digital VT Series
ANSI-BBS	TeleVideo 925/950
AT&T 605/705	Wyse 50/60

Connectors:

Direct Serial	Telnet
Meridian LAT 32	Trace Play
Modem	

File Transfer Protocols:

FTP	XYModem
Kermit	ZModem

Any or all Client Options can be installed along with the base product.

- ▼ Custom

Used to install selected components and sub-components of the base product and Client Options. Also used to install a Client Option after installation of the base product.

These two selections are presented in the **Setup Type** dialog during installation.

Session Properties Control

Session properties usage is unlimited. The user is able to modify all application and session properties. This includes the ability to configure all emulation, connector and file transfer parameters as well as modify menus and toolbars to customize the application and/or sessions.

Access Control

Installation of DCS 9 can only be multi-user – any user that can log on to the client system is able to use DCS 9.

Program Group Naming

The program group name can be changed to either:

- ▼ An existing folder
- ▼ A new folder

The install file location can also be changed to any location.

Standard Install Procedure

After completing pre-installation activities, follow the steps below to set up an individual copy of DCS 9. These steps use the standard install method for installing from a CD-ROM.

Some steps may ask to enter information or to make a choice. Read the descriptions carefully before completing the step. Most steps do allow you to return to the previous screen to make changes, if necessary. However, copying of DCS 9 files begins when you click **Next** on the **Select Usage** screen. To make corrections at this point, you will need to remove DCS 9 and reinstall.

Step 1: Start the Setup Program

Start the installation program using one of the techniques discussed in Chapter 2 Setup Program.

Step 2: Respond to Setup dialogs

Setup Dialog 1: Welcome

The **Welcome** message indicates that the Setup program is now ready to begin installation of DCS 9 and reminds you to quit any running applications. It also includes the copyright warning.

To respond to this dialog

- ▼ Choose one of the following:
 - **Next** to continue with the installation.
 - **Cancel** to exit Setup.

Setup Dialog 2: License Agreement

Installation and use of DCS 9 is governed by the terms of the online license agreement. Make sure you read and agree to the terms of the agreement before installing DCS 9.

If you have any questions about the terms of the online license agreement, please contact your FutureSoft account manager or send e-mail to info@futuresoft.com.

To respond to this dialog

- 1 Choose to accept/not accept the license agreement terms.
- 2 Choose one of the following:
 - **Back** to return to the **Welcome** dialog.
 - **Next** to continue with the installation.
 - **Cancel** to exit Setup.

Setup Dialog 3: Customer Information

The **Customer** information identifies you to DCS 9. You must complete both entries to continue the installation.

To respond to this dialog

- 1 Enter the following:
 - Your full name in **User Name**.
 - Your company name in **Organization**.
- 2 Choose one of the following:
 - **Back** to return to the **Software License Agreement** dialog.
 - **Next** to continue with the installation, or
 - **Cancel** to exit Setup.

Setup Dialog 4: Setup Type

Four options are presented for installing components and sub-components of DCS 9:

- ▼ **Complete**
- ▼ **Custom**

See the first page of this chapter for a description of each option.

To respond to this dialog

- 1 Select one setup option.
- 2 Choose one of the following:
 - **Back** to return to the **Choose Destination Location** dialog.
 - **Next** to continue with the installation.
 - **Cancel** to exit Setup.

Optional Setup Dialog: Custom Setup

When the “Custom” setup type is chosen, the next dialog shown is **Custom Setup**.

All components of the base product and all Client Options are shown. Each component displays the local hard drive icon which means that it will be installed on the local hard drive. To change how, or if, the component is installed, click on the down arrow on the hard drive icon and select from one of the available options.

Selecting a component hard drive icon displays space requirements for the selected component in the Feature Description group. To see space requirements for all selected components, click **Space** to display the **Disk Space Requirements** dialog. This dialog lists the available space on the selected drive and the space requirements for the selected DCS components. Highlighted volumes indicate that space requirements for DCS are greater than the available space. Click **OK** to return to the **Custom Setup** dialog.

On the **Custom Setup** dialog, **Install to** displays the location where DCS files will be installed. The default location is the **C:\Program Files\FutureSoft\DCSeries** folder. Use **Change...** to modify this location, if needed.

To respond to this dialog

- 1 Change the components and sub-components to be installed or their installation location as needed.
- 2 Choose one of the following
 - **Back** to return to the **Select Setup Type** dialog.
 - **Next** to continue with the installation.
 - **Cancel** to exit Setup.

Setup Dialog 5: Ready to Install the Program

The **Ready to Install the Program** dialog allows you to return to previous screens to make any last minute changes.

To respond to this dialog

- ▼ Choose one of the following
 - **Back** to return to the **Select Setup Type** dialog.
 - **Install** to continue with the installation.
 - **Cancel** to exit Setup.

Setup Dialog : InstallShield Wizard Completed

The **InstallShield Wizard Completed** dialog is the last dialog displayed in the installation of DCS 9. Two options are provided:

To respond to this dialog

- ▼ Click **Finish** to complete the installation.

Installation of DCS 9 is complete.

Licensing DCS 9 and Client Options

If you installed an evaluation version of DCS 9 or would like to activate a Client Option, the Licenser utility applies the valid serial number that you received when the product was purchased. The Licenser utility is started from the DynaComm Connectivity Series 9 program group.

To apply a valid serial number

- 1 On the Windows taskbar, click **Start** and highlight **Programs**.
- 2 Highlight **DynaComm Connectivity Series 9** and click **Licenser**.
The FutureSoft Licenser dialog appears.
- 3 Enter the serial number in the provided box and click **License**.
The DynaComm Connectivity Series dialog appears.
- 4 In the **User Information** group, do the following:
 - a In **User name**, enter a complete user name.
 - b In **Organization**, enter a complete organization or group name.
- 5 Click **OK**.
A confirmation dialog appears.
- 6 Click **OK**.
A question dialog appears.
- 7 Do one of the following:
 - Click **No** to end the licensing function.
 - Click **Yes** to repeat steps 3 through 6.

Optionally, the Licenser utility can be run from a command line or in a batch file. The command takes the form of:

```
licenser /L #####
```

where “#” represents the base product or Client Option serial number.

Note: Licensing on Windows Vista systems requires Administrator access rights.

Installation Troubleshooting

If you encounter an error while installing DCS 9, one of the following common installation problems may have occurred:

- ▼ **General file transfer error**
The Setup program was unable to copy the files to your destination directory. Make sure you have permission to write to or modify the specified destination directory.
- ▼ **Installation has detected a previous version of the DynaComm Connectivity Series**
DCS 9 cannot be installed over a previous version of DCS. You must remove the previous version first, then install DCS 9.
- ▼ **Error reading disk drive**
 - Make sure the CD drive is in proper working order. Try reading another CD in the same drive.
 - Make sure you have inserted the installation CD correctly in the disk drive – the label should be face up.
 - If the drive is functioning and the media is properly inserted, the disk may be defective. If you are installing from a backup copy, install from the original media instead. If you are installing from the original media, please contact your FutureSoft Account Manager for a replacement.

Chapter 5

Removing DCS 9

Removing All Components

The uninstall utility removes only those items installed by the Setup program. It does not remove session files, scripts, memo documents, custom keyboard maps, or any other file not installed by Setup. Also, it does not remove an installed file that has been renamed. Removing the base DCS 9 program also removes all Client Options.

Step 1: Start the Setup Program

Start the Setup Program using one of the techniques discussed in Chapter 2 Setup Program.

Step 2: Respond to Setup Dialogs

Setup Dialog 1: Welcome

The Welcome dialog appears when the Setup Program has completed loading.

To respond to this dialog

- Click Next.

Setup Dialog 2: Program Maintenance

The Program Maintenance dialog offers three options. The Remove option removes all program components, including Client Options, of DCS 9.

To respond to this dialog

- Select Remove.
- Click Next to start the removal.

Setup Dialog 3: Remove The Program

The Remove the Program dialog appears to confirm the removal.

- Click Remove to start the removal.

Setup Dialog 4: Maintenance Complete

The Maintenance Complete dialog appears when the removal is complete.

To respond to this dialog

- Click Finish to close the Setup Program.

Removing Selected Components

The Setup program can remove selected components and/or sub-components of DCS 9. When the **Custom Setup** dialog appears, all installed components are listed.

Step 1: Start the Setup Program

Start the Setup Program using one of the techniques discussed in Chapter 2 Setup Program.

Step 2: Respond to Setup Dialogs

Setup Dialog 1: Welcome

The **Welcome** dialog appears when the Setup Program has completed loading.

To respond to this dialog

- Click **Next**.

Setup Dialog 2: Program Maintenance

The **Modify** option allows for removal of selected program components.

To respond to this dialog

- Select **Modify**.
- Click **Next** to start the removal.

Setup Dialog 2: Custom Setup

- ▼ To remove a component,
 - 1 Select the item.
 - 2 On the pop-up menu, select “This feature will not be available”.
 - 3 Choose one of the following
 - **Back** to return to the **Select Setup Type** dialog.
 - **Next** to continue with the removal.
 - **Cancel** to exit Setup.

Setup Dialog 3: Ready to Modify the Program

The **Ready to Modify the Program** dialog appears to confirm the removal.

- Click **Install** to start the removal.

Setup Complete

The **InstallShield Wizard Completed** dialog appears when the removal is complete.

To respond to this dialog

- Click **Finish** to close the Setup Program.

Index

A

- ADDS VP/60 emulation 6, 23
- ANSI-BBS emulation 6, 23
- application, launching 6
- AT&T 4425 Client Option 7
- AT&T 4425 emulation 6, 23
- AT&T 605/705 emulation 6
- AT&T 6539 emulation 7
- attribute files 18, 20

B

- base product 23
- block mode 8

C

- CD-ROM 14, 21, 23
- CD Autorun 21–22
- Client Options 5, 7–9
 - AT&T 4425 7
 - HP 700/94 8
 - Standard Install 15, 23
 - Tandem 6530 8
 - TN3270 9
- components 13
 - removing 29
- configurations 14
- configure 24
- connectors 6, 23–30
 - AT&T 4425 7
 - HP 700/94 8
 - SNA Server (Microsoft) 6, 9
 - Tandem 6530 8
 - TN3270 9
 - Trace Play 23
- connector object 18, 20
- control, range of 13, 14, 24
- Control Panel, Windows 22
- Custom setup type 15, 23, 26

D

- date calculations 6
- DCS 8
 - installing 24–29
 - removing 29–30
- DEC. *See* Digital VT Series emulation
- dialogs
 - Maintenance Complete 29
 - Select Components 30
 - Select Setup Type 25
 - Setup Complete 30
 - Setup Maintenance 29
 - Setup Type 23
 - Software License Agreement 25
 - User Information 25
 - Welcome 25
 - Welcome (Setup Maintenance) 30
- Digital VT Series emulation 6, 23
- direct serial connector 6, 7, 8, 23
- display files 18
- distribution 13
- documentation library 10
- documents
 - memo 6, 17, 20
 - script 17, 18, 20
 - session 17, 20
- download
 - files 18

E

- e-mail 25
- ebooks 10
- editors
 - menu 6
 - OLE 6
 - toolbar 6
- EHLLAPI 7, 9
- EM3270 support 8
- emulation 14
 - files 18
- emulations 7–9, 23
 - AT&T 4425 7
 - HP 700/94 8
 - Tandem 6530 8
 - TN3270 9

- TN5250 9
- emulation object 20
- errors 27
- euro symbol 6
- evaluation version 27

F

files

- Active Server Pages (ASP) 18
- attribute 18, 20
- connector 18, 20
- display 18
- download 18
- emulation 18, 20
- file transfer 18, 20
- font 18
- install 24
- keyboard 18, 20
- memo 6, 18
- script 6, 17, 18, 20
- session 6, 18
- trace 18, 20
- upload 18
- user 13
- Visual Basic 18
- file transfer 27
- file transfer object 20
- file transfer protocols 23
 - AT&T 4425 7
 - base product 6
 - HP 700/94 8
 - object files 18
 - Tandem 6530 8
- file types 20
- folders 24
 - install 18
- font 8, 18
- FTP protocol 6, 7, 8, 9, 23
- functions, scripting 6
- function keys 8

H

- host systems 14
- hotspot support 8, 9
- HP 700/94 Client Option 8
- HP 700/94 emulation 6

I

- IND\$FILE protocol 6, 9
- install 14
 - files 24
 - methods 5
 - procedure 24–29
- InstallShield Wizard 22
- IXF protocol 6

K

- Kermit protocol 6, 7, 8, 23–30
- keyboard
 - files 18
- Keyboard Map files 20

L

- licensed copy 16, 27
- Licenser utility 27
- LU1/LU3 print 9

M

- Maintenance Complete dialog 29
- media, installation 16
- memo document 18, 20
- menus, application 24
- Meridian LAT32 connector 6, 23
- methods, install 15
 - Standard Install 23–30
- modem connector 6, 7, 8, 23–30
- multi-user mode 24

O

- OLE 6
- Online References 10
- Options dialog 19

P

- printing support 9
- procedure 24–28
- program group 17, 24, 27
- properties, session 24
- protocols, file transfer 7, 8

R

- Readme file 10
- registered user 11
- registration 17
- Registry, Windows 17
- Release Notes 10
- removing DCS 8 17
- requirements, system 15

S

- script
 - compiling 20
 - documents 20
 - files 18, 20
 - launching 6
- Script Language, DCS 8 6
- security 13
- Select Components dialog 30
- Select Setup Type dialog 25
- serial number 16, 27
- session 7
 - files 18, 20
 - properties 24
- Setup Complete dialog 30
- Setup Program 21–22, 24, 29, 30
- setup types 15, 23
- Setup Type dialog 23
- SNA Server (Microsoft) connector 6, 9
- Software License Agreement dialog 25
- space available 26
- space required 26
- Standard Install method 23–30
- string, sending 6
- string, Uninstall 17
- support, technical 11
- system requirements 15

T

- Tandem 6530 Client Option 8
- Tandem 6530 emulation 6
- TeleVideo 925/950 emulation 6, 23
- Telnet connector 6, 7, 8, 9, 14, 23
- TN3270E emulation 9
- TN3270 Client Option 9
- TN3270 emulation 6
- TN5250E emulation 9

- TN5250 emulation 6
- toolbars 6, 24
- Trace Facility files 18, 20
- Trace Play connector 23
- troubleshooting 14, 27
- Typical setup type 15, 23

U

- uninstall. *See* removing DCS 8
- Uninstall string 17
- unlimited control, user 24
- updating 13
- upgrades 11, 14
- upload files 18
- user control 14
- user groups 14
- User Information dialog 25–29
- utilities
 - Licenser 27

V

- version
 - Client Options 17
 - DCS 8 17
 - documentation 10
 - file 10
 - product 10, 11, 16
- Visual Basic 18, 19

W

- web site
 - FutureSoft 5, 10, 11
- Welcome (Setup Maintenance) dialog 29, 30
- Welcome dialog 25
- window, DCS 8 6
- Windows, Microsoft 15
- Windows 2000, folders 19
- Windows NT, folders 19
- Windows Registry 17
- Windows XP, folders 19
- WinHLLAPI 7, 9
- wizard, InstallShield 22
- Wyse 50/60 emulation 6, 23

X

XModem protocol 7, 8

XYModem protocol 6, 23

Y

Y2K 6

YModem protocol 7, 8

Z

ZModem protocol 6, 7, 8, 23